

# Lab 8

Broadband internet via 5G network in Taltech using Quectel UE

2026

# Preparation

- Quectel UE provides internet connection to the computer via 5G SA network
- Steps
  - Connect UE
  - Set or modify APN (DNN, Data Network Name)
    - internet1.taltech.ee
  - IP type
    - IPv4



# Settings

## Status

### Network status



### You're connected to the Internet

You're on a metered network. Some apps might work differently to help you save data while on this network.



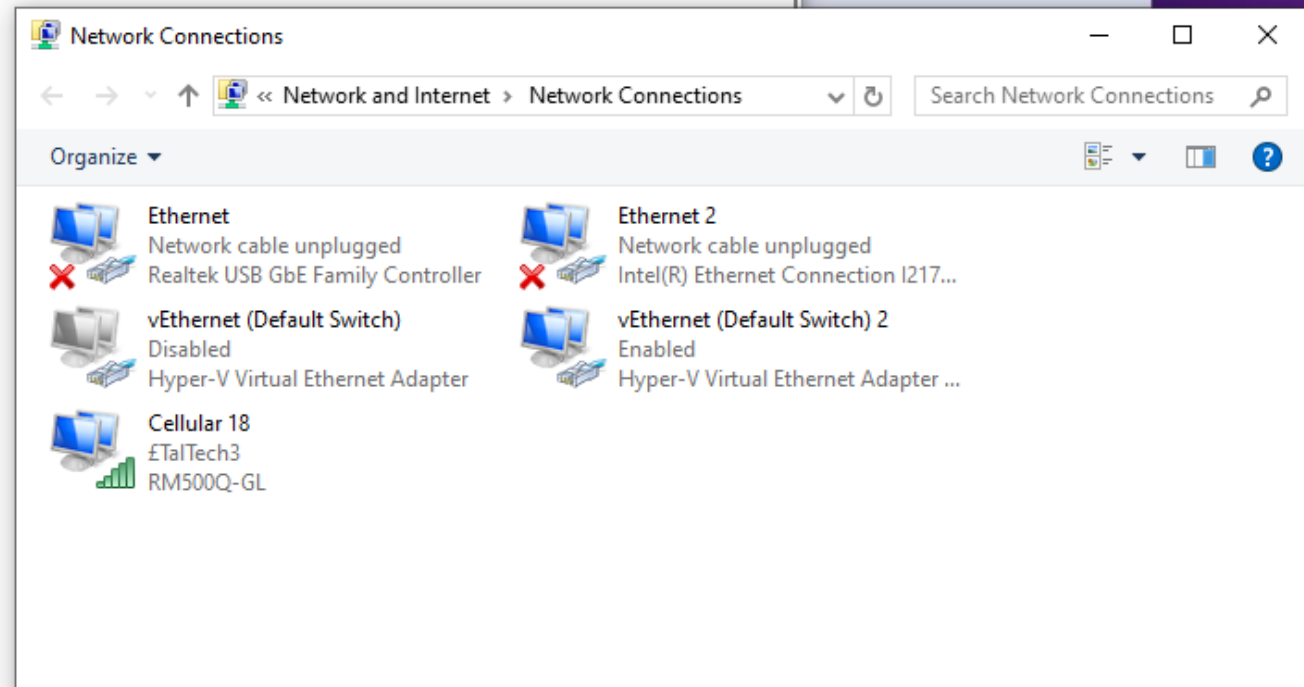
Properties

Data usage

Show available networks  
View the connection options around you.

Get help

Give feedback



# First tasks

- Ping and compare results of 5G and LAN.
  - `www.example.com`
- Traceroute and compare results of 5G and LAN
  - `www.example.com`
- Speed test and compare results of 5G and LAN
  - In 5G network: `192.168.100.2` and one computer in the classroom
  - In LAN: one computer in the classroom

## Run iperf3

- upload:
  - `iperf3 -c 192.168.100.2`
- download:
  - `iperf3 -c 192.168.100.2 -R`
- Server:
  - `iperf3 -s`

# Lab report (1 page PDF)

- Lab number, title, author, date
- **Task:**
  - Determine parameters of 5G NR: delay, throughput, packet loss
  - Compare parameters of 5G NR with parameters of room U02-209 LAN
- Summary and conclusions